

Corrigendum

Aylin Özodabaş*

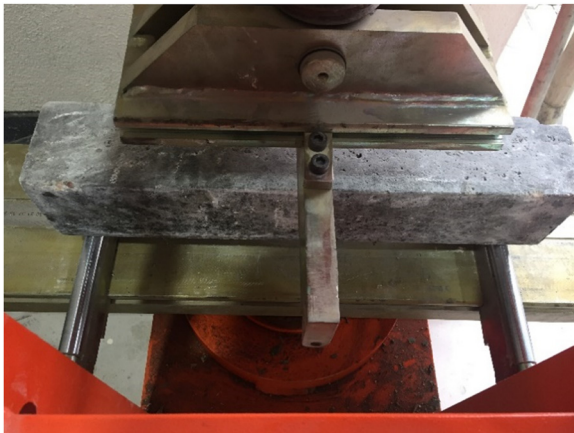
Corrigendum to: “The ductility performance of concrete using glass fiber mesh in beam specimens”

<https://doi.org/10.1515/arh-2024-0199>

received August 26, 2024; accepted September 24, 2024

Corrigendum to: Özodabaş A. “The ductility performance of concrete using glass fiber mesh in beam specimens”. Appl Rheol. 2023;33(1):20230109. 10.1515/arh-2023-0109. This corrigendum corrects inaccuracies and errors noticed after publication of the original article.

1. Figure 4 is replaced by the following figure:



2. The correct caption for Figure 5 is as follows: 28-Day flexural strength tests of GFM in C25 and SCC concrete specimens [2].

3. The text inside the bar in Figure 10 has been changed to SCC (sulfated) instead of C25 (sulfated) to correct the author’s mistake. Correct version of Figure 10 can be found as follows:

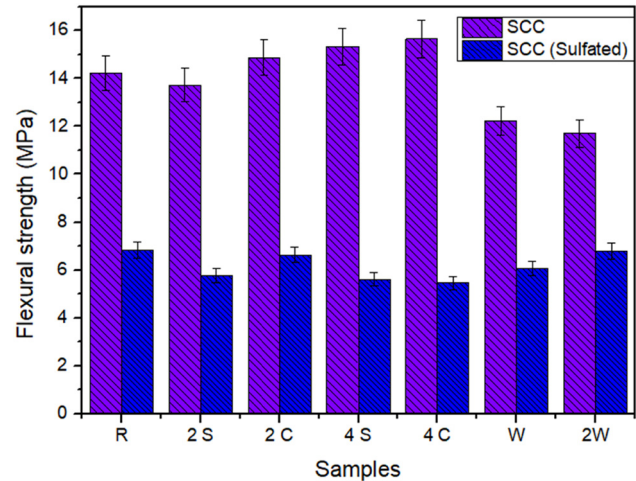


Figure 10: SCC specimens kept in sulfated water for 90 days.

4. Figure 8 in original article, presenting data for 28-day values (instead of 90-day values), is replaced as follows:

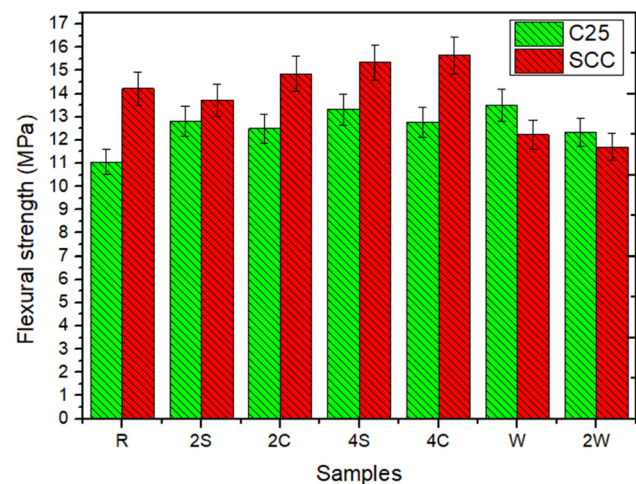


Figure 8: 90-Day flexural strength tests of GFM in C25 and SCC concrete specimens.

5. The text beginning “As shown in Figure 8...” in Section 1.4 of the original article is replaced by “As shown in Figure 8, the results are consistent and the best flexural strength values were obtained from SCC specimens placed

* **Corresponding author: Aylin Özodabaş**, Department of Civil Engineering, Faculty of Engineering, Bilecik Şeyh Edebali University, 1100 Bilecik, Turkey, e-mail: aylin.ozodabas@bilecik.edu.tr

in a flat position. The flexural values of the control samples are consistent with the literature [2–4].”

Funding information: There is no funding for this article.

Author contributions: The author confirms sole responsibility for the following: study conception and design, data collection, analysis and interpretation of results, and article preparation.

Conflict of interest: The author declares no conflict of interest.

Ethical approval: The conducted research is not related to either human or animal use.

Data availability statement: Derived data supporting the findings of this study are available from the corresponding author on request.

References

- [1] Özodabaş A. The ductility performance of concrete using glass fiber mesh in beam specimens. *Appl Rheol.* 2023;33(1):20230109. doi: 10.1515/arh-2023-0109.
- [2] Özodabaş A. Increased bending strength in beam samples using waste textile fibers. *JCEC.* 2022;11(4):228–38. doi: 10.32732/jcec.2022.11.4.228.
- [3] Anwar MM. Influence of nano materials on flexural behavior and compressive strength of concrete. *HBRC J.* 2014;12:212–25. doi: 10.1016/j.hbrj.2014.11.006.
- [4] Mansoori AR, Moein MM, Mohseni E. Effect of micro silica on fiber-reinforced self-compacting composites containing ceramic waste. *J Compos Mater.* 2020;55(1):1–13. doi: 10.1177/0021998320944570.
- [5] Akinyele JO, Odunfa SO, Famoye AA, Kuye SI. Structural behavior of metakaolin infused concrete structure. *NIJOTECH.* 2017;36(2):331–8. doi: 10.4314/njt.v36i2.2.